

DreamSpace TV: Episode Eight Student Activity Sheet

Name: _____

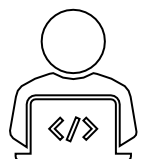
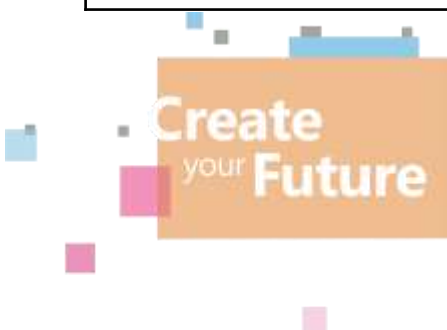
Date: _____

PLAN

<p>What temperature would be too cold at home? _____</p> <p>What temperature would be too hot at home? _____</p> <p>What temperature is perfect at home? _____</p> <p>What is the sign for greater than? _____</p> <p>What is the sign for less than? _____</p> <p>When will these conditions be monitored? (e.g. on start, forever, on a certain input?) _____</p>

Once the above is complete, plan out your conditions and specifically what happens when a condition occurs (i.e. the "then" part of our statements):

<p>If temperature < _____ then:</p>
<p>If temperature > _____ then:</p>
<p>Else (remember it will be the range between your less than and greater than number):</p>



DreamSpace TV: Episode Eight Student Activity Sheet

Name: _____

Date: _____

DO

- Develop a program using code that will alert people at home when the temperature has reached a certain level.
- Be sure to:
 1. Log onto makecode.microbit.org to complete the challenge.
 2. Use "if...then" conditions to write code that will inform the person at home if the temperature is less than a certain number, greater than a number or in between both.
 3. Test, test, test!

REVIEW

1. What range did you use between your less than and greater than number? Why did you pick this range?

2. If you could add to this program, with extra technology or code, what would you do to make it even better?

